

Ottershaw Neighbourhood Plan

Evidence Base Document

Ottershaw Village Highways Proposals

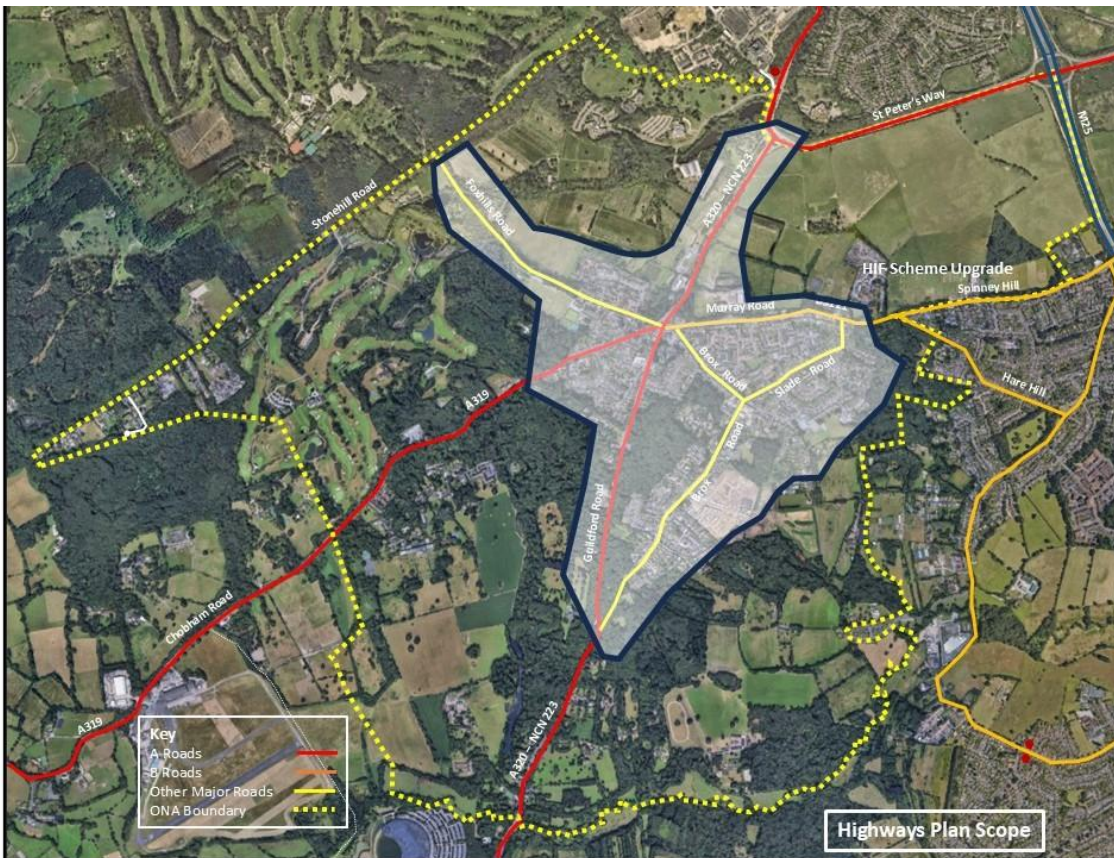
May 2025

Introduction

The following document has been compiled by the Ottershaw Highways Team, drawn from representatives of a variety of community groups across Ottershaw and led by the Ottershaw & West Addlestone Residents Association (OWARA). The document has been drawn from a wide variety of sources to elicit community opinion including the Ottershaw Transport Assessment, surveys (3), social media posts and comments and face to face meetings. It is therefore felt to represent the wishes of the Ottershaw community.

Scope

Geographically the highways plan covers The area shown below:



Recent Activity Update

The plan was formally submitted to Surrey County Council in June 2025. On SCC's request all the aspects of the plan (except public transport) were entered into the SCC database for action.

Subsequently, the following elements of the plan are now being taken forward.

- Speed limit reductions on A320 and moving of the 30mph limit further from the village (consultation stage)
- Speed limit reductions/traffic calming (if required) in Ottershaw south of the A320 (Brox/Slade Roads, Bousley Rise, Fletcher Road Fletcher Close (funded 26/27FY/planned/study awaiting)

The Ottershaw Neighbourhood Forum, in line with community opinion, has offered Neighbourhood Community Infrastructure Levy (NCIL) monies to bring other aspects of the plan to fruition. This is currently in work.